



BLUMENORT MANITOBA

L.U.D. OF BLUMENORT

**2025
SERVICE PLAN &
COMMUNITY
PROJECTS**



AGENDA

- ▶ 2025 Service Plan
 - ▶ 2025 Capital and Construction Projects
 - ▶ 2024 Completed Projects
 - ▶ Community Services and Offerings
 - ▶ Hanover and Blumenort Recreation
- 
- A decorative graphic consisting of several parallel white lines of varying lengths, slanted upwards from left to right, located in the bottom right corner of the slide.

Blumenort Local Urban District Committee:

- ▶ Kevin Medeiros – Chair 204-371-6309
- ▶ Roger Dueck 204-392-4564
- ▶ Floyd Penner 204-392-2713
- ▶ Roberto Hiebert Ward 3 Councillor

INTRODUCTIONS

**Luc Lahaie, CAO
RM of Hanover**

COMMUNITY'S HISTORY

- ▶ Unincorporated Village District (UVD) of Blumenort was created in 1963.
- ▶ UVD changed to the Local Urban District of Blumenort in 1998 when the new Municipal Act came into effect.

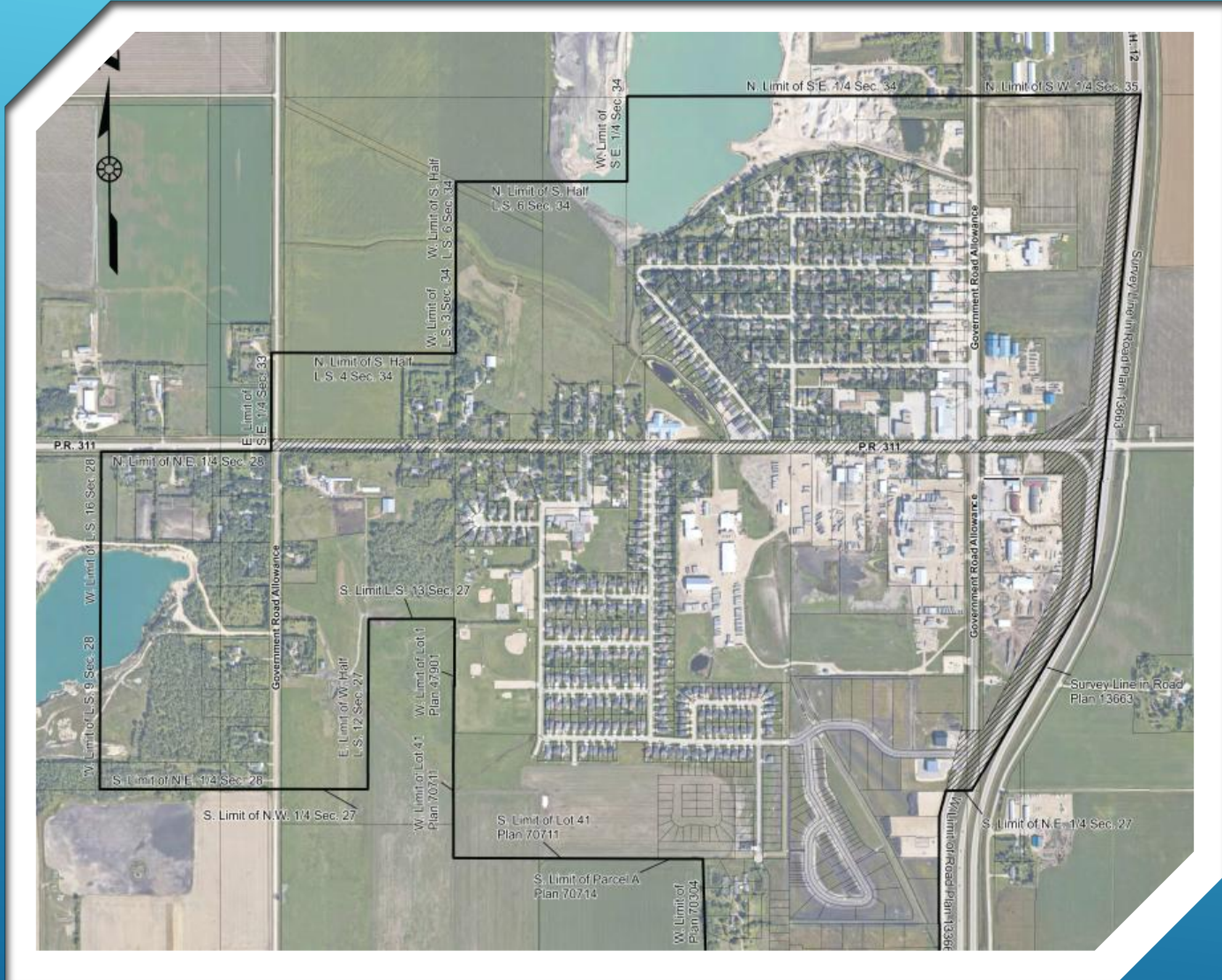
WHAT'S AN LUD?

The RM is the local authority responsible for overall operation of the municipality

The LUD has been delegated certain duties:

- Road Maintenance (repairs, snow removal, street cleaning)
 - Drainage/Ditch Maintenance
 - Street Signage and Street Lighting
 - Sidewalk and Boulevard Maintenance (including mowing)
 - Composting and Solid Waste issue not provided by RM program
 - Weed Control
 - Public Parks Management (that's not overseen by recreation department)
-
- LUD sets service levels and annual mill rate for the community
 - LUD is not responsible for planning issues (zoning, CUs, variations and subdivisions)
 - Council and Administration works closely with the LUD Committee on all areas that impact residents

CURRENT LUD BOUNDARIES

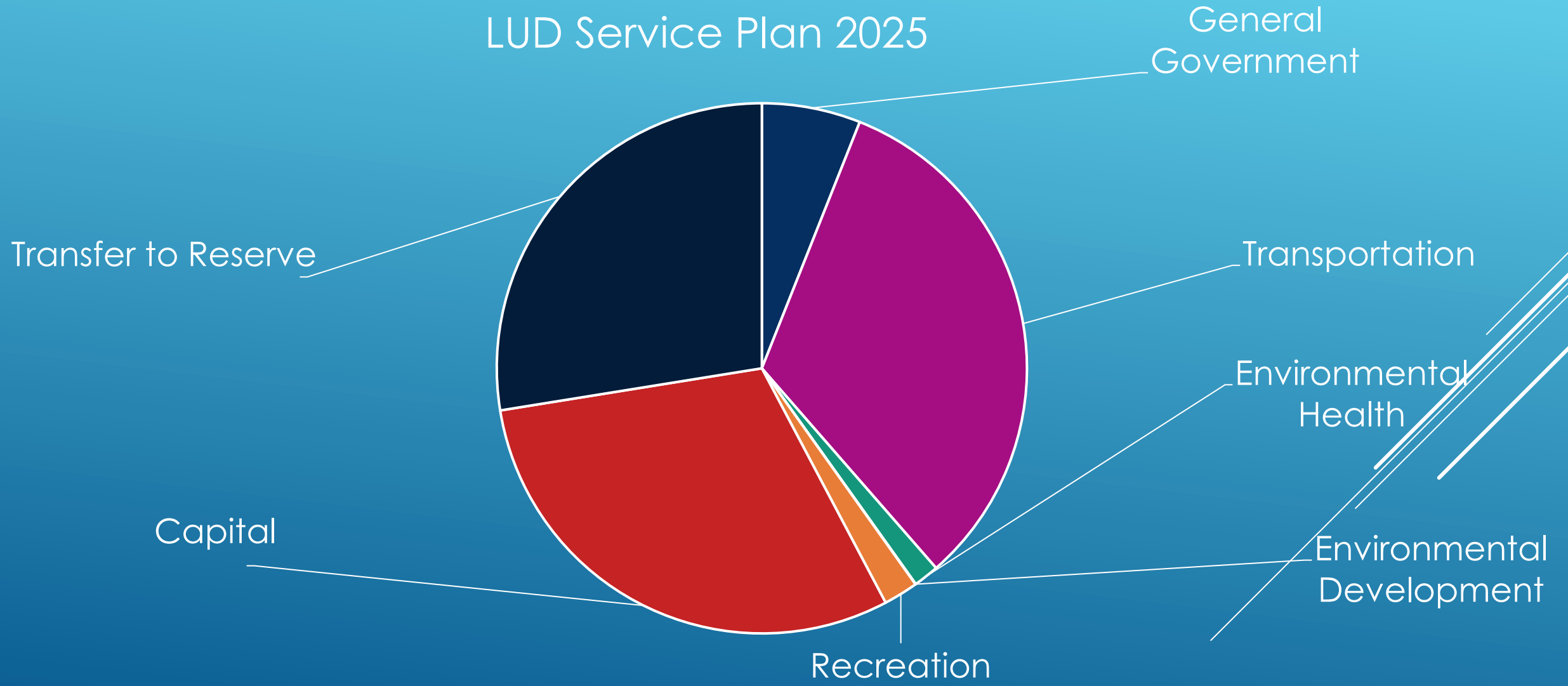


2025 SERVICE PLAN

- ▶ The LUD will be raising \$538,927 this year, up from last year's revenue of \$507,218.
- ▶ Mill rate is down to **3.885 mills**, down from the last 3 years (2022, 2023, 2024) at **4.255 mills**

LUD of Blumenort

Total 2025 Expenses - \$793,498



2025 SERVICE PLAN

General Government - \$47,794

- ▶ Legislative - \$27,794
- ▶ Grants - \$20,000

Environmental Health - \$12,343

- ▶ Supplemental composting services - \$12,343

Environmental Development Services - \$200


- ▶ Public Space Weed Control - \$200

Recreation and Cultural Services - \$16,695

- ▶ Pocket Park Maintenance \$16,695

2025 SERVICE PLAN

Transportation Services - \$258,347

- ▶ Road & Street Maintenance - \$169,259
 - ▶ Sidewalk & Boulevard - \$2,400
 - ▶ Ditches & Road Drainage - \$367
 - ▶ Street Cleaning - \$9,739
 - ▶ Snow Removal - \$46,500
 - ▶ Street Lighting - \$28,351
 - ▶ Other - \$1,731
- 

2025 CAPITAL PROJECTS

- 1) Parkview Bay Repavement - Remove existing Asphalt, replace Curb and Gutter as required, Reshape and add required Base Material and Repave with 75mm Asphalt Surface. \$45,900
- 2) Stoney Creek Pond Asphalt Pathway – Project Description: Prepare new base along existing granular pathway, install 2.0m wide Asphalt Pathway and landscape as required. \$37,500
- 3) Crestview and Edgemont Concrete Sidewalk: Remove existing fill material and install 1.5m wide Concrete sidewalk on backside of Curb along Crestview and Edgemont. \$100,270
- 4) Dog Park - \$10,000
- 5) Tree Planting - \$15,000
- 6) Various Asphalt Upkeep - \$45,900

Total Capital Projects - \$208,670

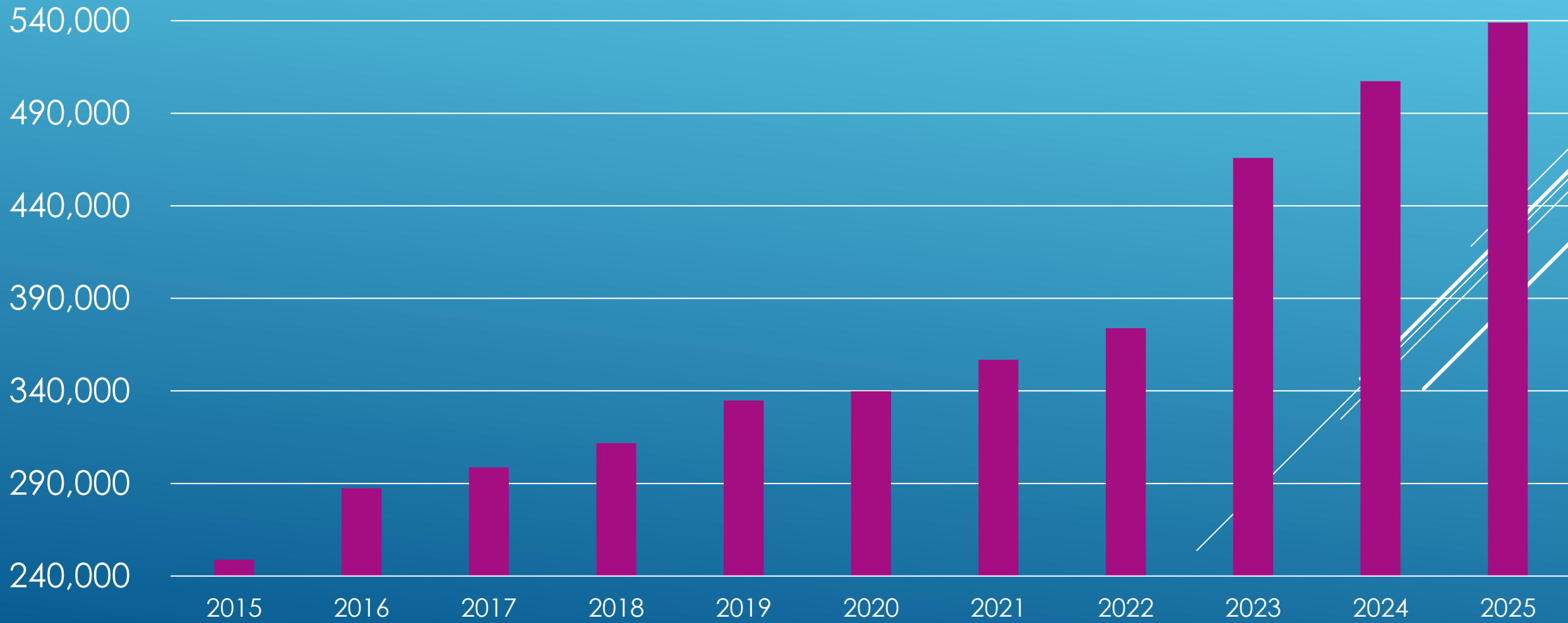
Tax Comparison - \$350,000 Residential Property

Assessment adjusted for 20.2% average increase in assessment, \$420,700
Excludes solid waste fees and utility fees

Area	2024	2025	Change	% of Change
Mitchell	1,612	1,583	(29)	(1.80%)
Grunthal	1,981	2,137	156	7.87%
Blumenort	1,116	1,278	162	14.51%
New Bothwell	1,727	1,841	114	6.60%
Kleefeld	1,613	1,687	74	4.59%
Rural	1,570	1,698	128	8.15%

Blumenort's overall total municipal taxes (At-large and LUD rates) will be increasing in 2025

LUD Taxes Raised 2015-2025



2025 RESERVE BALANCES

LUD Reserve:

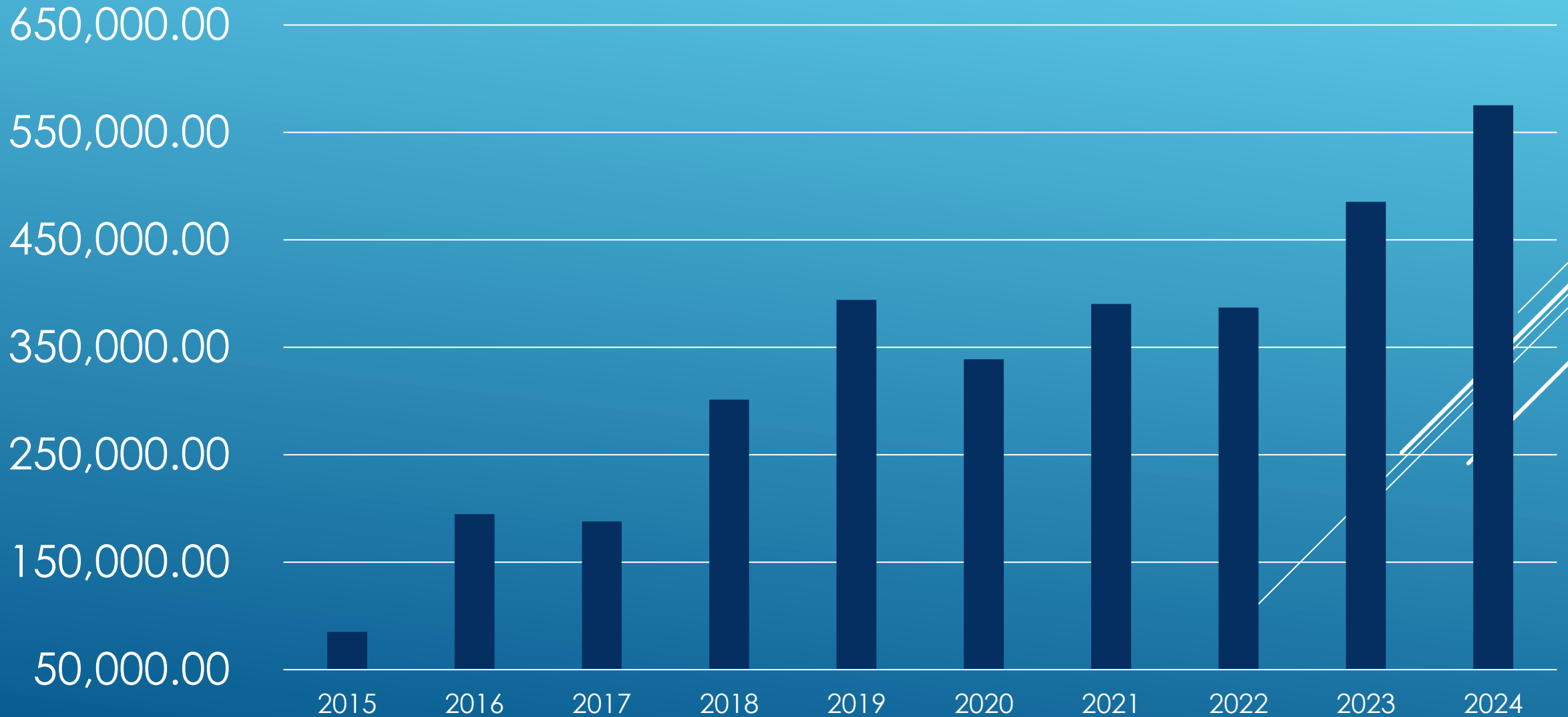
2025 Beginning Balance at January 1	\$529,246
2025 Reserve Contribution	+ \$218,549
2025 Withdrawal for Capital Projects	- \$217,545
<hr/>	
2025 Projected Ending Balance	\$528,242

BLUD Sidewalk Reserve (from Developer's lot fees) \$23,390

BLUD Greenspace Reserve (from Developers' lot fees) \$16,594

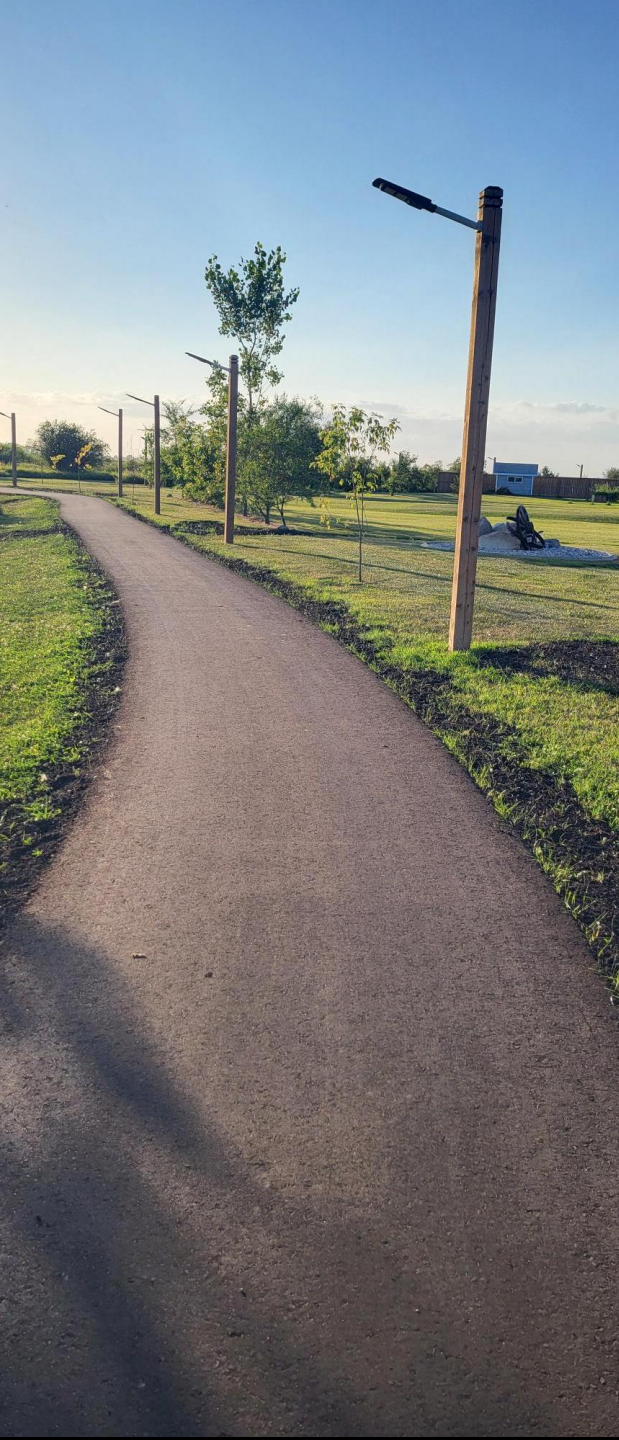
LUD of **Blumenort**

Year-end Reserve Balance 2015-2025



COMPLETED PROJECTS!!





Compost SPRING SCHEDULE 2025

MAY 2025

Sun	Mon	Tue	Wed	Thu	Fri	Sat
				1	2	3
4	5	6	7	8	9	10
11	12	13	14	15	16	17
18	19	20	21	22 GRUNTHAL CURBSIDE MITCHELL CURBSIDE	23 KLEEFELD CURBSIDE BLUMENORT CURBSIDE	24
25	26 NEW BOTHWELL	27	28	29 GRUNTHAL CURBSIDE MITCHELL CURBSIDE	30 KLEEFELD CURBSIDE BLUMENORT CURBSIDE	31

JUNE 2025

Sun	Mon	Tue	Wed	Thu	Fri	Sat
1	2 NEW BOTHWELL	3	4	5 GRUNTHAL CURBSIDE MITCHELL CURBSIDE	6 KLEEFELD CURBSIDE BLUMENORT CURBSIDE	7
8	9 NEW BOTHWELL	10	11	12 GRUNTHAL CURBSIDE MITCHELL CURBSIDE	13 KLEEFELD CURBSIDE BLUMENORT CURBSIDE	14
15	16 NEW BOTHWELL	17	18	19 GRUNTHAL CURBSIDE MITCHELL CURBSIDE	20 KLEEFELD CURBSIDE BLUMENORT CURBSIDE	21
22	23 NEW BOTHWELL	24	25	26 GRUNTHAL CURBSIDE MITCHELL CURBSIDE	27 KLEEFELD CURBSIDE BLUMENORT CURBSIDE	28
29	30 NEW BOTHWELL					

JULY 2025

Sun	Mon	Tue	Wed	Thu	Fri	Sat
		1	2	3 MITCHELL CURBSIDE	4 BLUMENORT CURBSIDE	5
6	7	8	9	10 MITCHELL CURBSIDE	11 BLUMENORT CURBSIDE	12

COMMUNITY DEPOT

New Bothwell
50 Park Bay
(Community Center)

OPERATIONAL HOURS
5:00PM TO 8:00PM
PLEASE **DO NOT** LEAVE BAGS
DURING NON-OPERATIONAL TIMES.

CURBSIDE COMPOST COLLECTION

L.U.D Mitchell THURSDAYS

L.U.D Grunthal THURSDAYS

L.U.D Blumenort FRIDAYS

NEW L.U.D Kleefeld FRIDAYS

CURBSIDE PICK UPS BETWEEN 7AM-7PM

NEED A GREEN BIN?
CALL 204-346-7129 EXT 0
EMAIL SOLIDWASTE@HANOVERMB.CA
L.U.D RESIDENTS ONLY

Compost FALL SCHEDULE 2025

AUGUST 2025

Sun	Mon	Tue	Wed	Thu	Fri	Sat
24	25	26	27	28 MITCHELL CURBSIDE	29 BLUMENORT CURBSIDE	30
31						

SEPTEMBER 2025

Sun	Mon	Tue	Wed	Thu	Fri	Sat
	1	2	3	4 MITCHELL CURBSIDE	5 BLUMENORT CURBSIDE	6
7	8 NEW BOTHWELL	9	10	11 GRUNTHAL CURBSIDE MITCHELL CURBSIDE	12 KLEEFELD CURBSIDE BLUMENORT CURBSIDE	13
14	15 NEW BOTHWELL	16	17	18 GRUNTHAL CURBSIDE MITCHELL CURBSIDE	19 KLEEFELD CURBSIDE BLUMENORT CURBSIDE	20
21	22 NEW BOTHWELL	23	24	25 GRUNTHAL CURBSIDE MITCHELL CURBSIDE	26 KLEEFELD CURBSIDE BLUMENORT CURBSIDE	27 MITCHELL COMMUNITY DEPOT 130 ASH ST (ARENA) 9AM-3PM
28	29 NEW BOTHWELL	30				

OCTOBER 2025

Sun	Mon	Tue	Wed	Thu	Fri	Sat
			1	2 GRUNTHAL CURBSIDE MITCHELL CURBSIDE	3 KLEEFELD CURBSIDE BLUMENORT CURBSIDE	4 MITCHELL COMMUNITY DEPOT 130 ASH ST (ARENA) 9AM-3PM
5	6 NEW BOTHWELL	7	8	9 GRUNTHAL CURBSIDE MITCHELL CURBSIDE	10 KLEEFELD CURBSIDE BLUMENORT CURBSIDE	11 MITCHELL COMMUNITY DEPOT 130 ASH ST (ARENA) 9AM-3PM
12	13 NEW BOTHWELL	14	15	16 GRUNTHAL CURBSIDE MITCHELL CURBSIDE	17 KLEEFELD CURBSIDE BLUMENORT CURBSIDE	18 MITCHELL COMMUNITY DEPOT 130 ASH ST (ARENA) 9AM-3PM
19	20 NEW BOTHWELL	21	22	23 GRUNTHAL CURBSIDE MITCHELL CURBSIDE	24 KLEEFELD CURBSIDE BLUMENORT CURBSIDE	25 MITCHELL COMMUNITY DEPOT 130 ASH ST (ARENA) 9AM-3PM
26	27 NEW BOTHWELL	28	29	30 GRUNTHAL CURBSIDE MITCHELL CURBSIDE	31 KLEEFELD CURBSIDE BLUMENORT CURBSIDE	

COMMUNITY DEPOT

New Bothwell
50 Park Bay
(Community Center)

OPERATIONAL HOURS
5:00PM TO 8:00PM
PLEASE **DO NOT** LEAVE BAGS
DURING NON-OPERATIONAL TIMES.

CURBSIDE COMPOST COLLECTION

L.U.D Mitchell THURSDAYS

L.U.D Grunthal THURSDAYS

L.U.D Blumenort FRIDAYS

NEW L.U.D Kleefeld FRIDAYS

CURBSIDE PICK UPS BETWEEN 7AM-7PM

NEED A GREEN BIN?
CALL 204-346-7129 EXT 0
EMAIL SOLIDWASTE@HANOVERMB.CA
L.U.D RESIDENTS ONLY

Garbage & Recycling 2025 SCHEDULE CHANGES



Pick Up Area	Service being Interrupted	Original Date	Date Change
Grunthal		Friday, April 18	Monday, April 21
Blumenort Kleefeld New Bothwell		Tuesday, July 1	Wednesday, July 2
Mitchell		Wednesday, July 2	Thursday, July 3
Grunthal		Friday, July 4	Monday, July 7
Blumenort Kleefeld New Bothwell		Tuesday, September 30	Wednesday, October 1
Mitchell		Wednesday, October 1	Thursday, October 2
Grunthal		Friday, October 3	Monday, October 6
Blumenort Kleefeld New Bothwell		Tuesday, October 14	Wednesday, October 15
Mitchell		Wednesday, October 15	Thursday, October 16
Grunthal		Friday, October 17	Monday, October 20
Blumenort Kleefeld New Bothwell		Tuesday, November 11	Wednesday, November 12
Mitchell		Wednesday, November 12	Thursday, November 13
Grunthal		Friday, November 14	Monday, November 17
Grunthal		Friday, December 26	Monday, December 29



WHAT CAN BE Composted?



Compostable

- ✓ Grass clippings
- ✓ Leaves
- ✓ Weeds (without seeds)
- ✓ Garden waste
- ✓ Peat moss
- ✓ Vegetables and fruits
- ✓ Coffee/filters, tea leaves/bags
- ✓ Egg shells
- ✓ Dead Flowers
- ✓ Compostable bags/Paper Bags



Not Compostable

- ✗ Branches, wood chips or sawdust
- ✗ Herbicide-treated grass clippings
- ✗ Meat and bones
- ✗ Dairy products
- ✗ Perennial and seed-bearing weeds
- ✗ Pet manure
- ✗ Diseased plants
- ✗ Metal
- ✗ Plastic/Plastic Bags

Community Compost Depot Info

DEPOTS ARE HELD ONCE PER WEEK BETWEEN 5:00 PM - 8:00 PM
DO NOT LEAVE BAGS OUTSIDE HOURS OF OPERATION ABOVE.

Curbside Compost Collection Info

ONLY COMPOST MATERIALS INSIDE THE BINS WILL BE COLLECTED.
 NO ADDITIONAL BAGS/MATERIALS BESIDE BINS.
 CONTENTS CAN BE ADDED TO THE BIN LOOSE OR IN COMPOST FRIENDLY BAGS.

BINS AT THE ROAD BY 7:00AM


NO PLASTIC BAGS!

Garbage & Recycling SCHEDULE

Pick Up Area	Day of the Week
BLUMENORT	TUESDAY
KLEEFELD	TUESDAY
ROSEVILLE DR, IVY RIDGE AREA	TUESDAY
MITCHELL AND AREA	WEDNESDAY
GRUNTHAL	FRIDAY
SHADY LANE, GREEN ACRES LANE AREA	FRIDAY

Schedule changes will be posted on our website, social media, and Community LED signs.



PR 311	SURFACE RECONSTRUCTION
PR 311 FROM PR 206 TO PTH 12	
 INVESTMENT CATEGORY Economic Development	CURRENT COST ESTIMATE \$17.18 M
PROJECT SCOPE PR 311 is a bituminous pavement highway through the community of Blumenort that was constructed in 1980, and an AST highway west of town to PR 206 that was constructed in 1976. This section of PR 311 is at the end of its service life and requires reconstruction. This project includes bituminous reconstruction, drainage improvements, and culvert replacements. This project also includes potential intersection treatments at various locations along the highway as required.	INTENDED OUTCOMES <ul style="list-style-type: none"> • Supports trade and commerce • Improved level of service • Eliminate rutting • Improved ride quality • New pavement to restore serviceability • Reduced vehicle wear and travel times • Improved operations at the intersection • Improvements to key economic trade routes • Continued/sustained RTAC level allowable gross vehicle weights

PR 311

STRUCTURE

STRUCTURE, AT MANNING CANAL: 1.9KM WEST OF PR 206



INVESTMENT CATEGORY

Renewal

CURRENT COST ESTIMATE

\$16.30 M

PROJECT SCOPE

The bridge over Manning Canal was constructed in 1981 and is part of the Regional Highway Network. The bridge is 42 years old and was damaged beyond repair due to a fire on May 10, 2023. PR 311 is closed in both directions from PR 216 to PR 206 and a route detour on provincial highways is in place. PR 311 conveys approximately 3,020 vehicles per day at this location and a portion of PR 311 is proposed to be upgraded to RTAC loading at this location in 2028/2029.

This project involves the replacement of the existing bridge with a structure to meet current design codes and highway safety standards.

INTENDED OUTCOMES

- Supports trade and commerce
- Improved level of service
- Improved public safety

An aerial photograph of an industrial area. A central road, Penner Drive, runs vertically. To the right, a road labeled PR311 runs horizontally, intersecting Penner Drive. The area contains several large industrial buildings, some with blue roofs, and numerous piles of lumber and other materials. There are also parking lots with cars and trucks. The background shows green fields and a highway on the right side.

Request sent into the Province:

- Penner Drive and PR311 Crosswalk

Provincial response:

Improvements will be considered once the PR311 upgrades are completed. Currently, a round about is being considered at that intersection.

PR311/PENNER DRIVE UPGRADES

A photograph of a community garden in a residential neighborhood. The garden is filled with various green plants, including leafy greens and tall stalks, some supported by wooden stakes and wire cages. The garden is situated in front of a row of houses with driveways and parked cars. The text "COMMUNITY GARDEN" is overlaid in white, bold, sans-serif font across the middle of the image.

COMMUNITY GARDEN

OPTIONAL



Establishing Citizens On Patrol Program In Your Community

Community members play a crucial role in COPP. The program would not exist without their support and dedication.

Any individuals or groups who identify a safety concern in their community can consider establishing a local COPP group and can apply to join the provincial program.

Manitoba COPP will provide groups with support and resources, including the necessary equipment and training to establish their COPP group.

How To Start And Run A COPP Group (Overview)

- Contact the Manitoba COPP or your local law enforcement office for direction and support. A Regional Representative may be available to come and talk to anyone interested in COPP.
- After a community meeting and/or reading all the information, if the group decides to organize the program, they will need to receive approval from their local law enforcement agency to start the group





SEINE RAT ROSEAU

WATERSHED DISTRICT

Rain Gardens

The SRRWD Rain Garden program provides funding and design support to property owners who wish to implement a rain garden to capture surface water runoff, rainwater, or sump pump discharge. A rain garden is a perennial garden planted in a shallow depression designed to capture and use water that may otherwise runoff. Rain gardens do NOT create standing pools of water but rather are a designated place for water to infiltrate into the ground (generally within 24 – 48 hrs of a rain event). The SRRWD will provide up to \$5,000.00 (50% cost-share) for schools and public spaces to establish a rain garden. We also provide grants of \$750.00 to homeowners who establish a rain garden on their property.





eNEWS



HAVE YOU HEARD?

STAY UP TO DATE ON HANOVER ENEWS BY SUBSCRIBING TO OUR MONTHLY NEWSLETTER!
ALL **CURRENTLY REGISTERED SUBSCRIBERS ALONG WITH THE NEW ONES** WILL HAVE A CHANCE TO WIN ONE OF THREE HANOVER-OWNED RECREATIONAL CENTRE HALL RENTALS AT THE LOCATION OF THEIR CHOICE. DRAWS WILL TAKE PLACE IN MAY 2025.

SUBSCRIBE ON OUR WEBSITE TODAY!
WWW.HANOVERMB.CA/P/SUBSCRIBE

FREE DRAW SIGN UP NOW





eNEWS

FREE DRAW SIGN UP NOW

WWW.HANOVERMB.CA



STAY IN THE LOOP

Want to stay up to date with what's happening in your community?

Follow us on our social media pages!



RuralMunicipalityofHanover
RMofHanoverRecreation



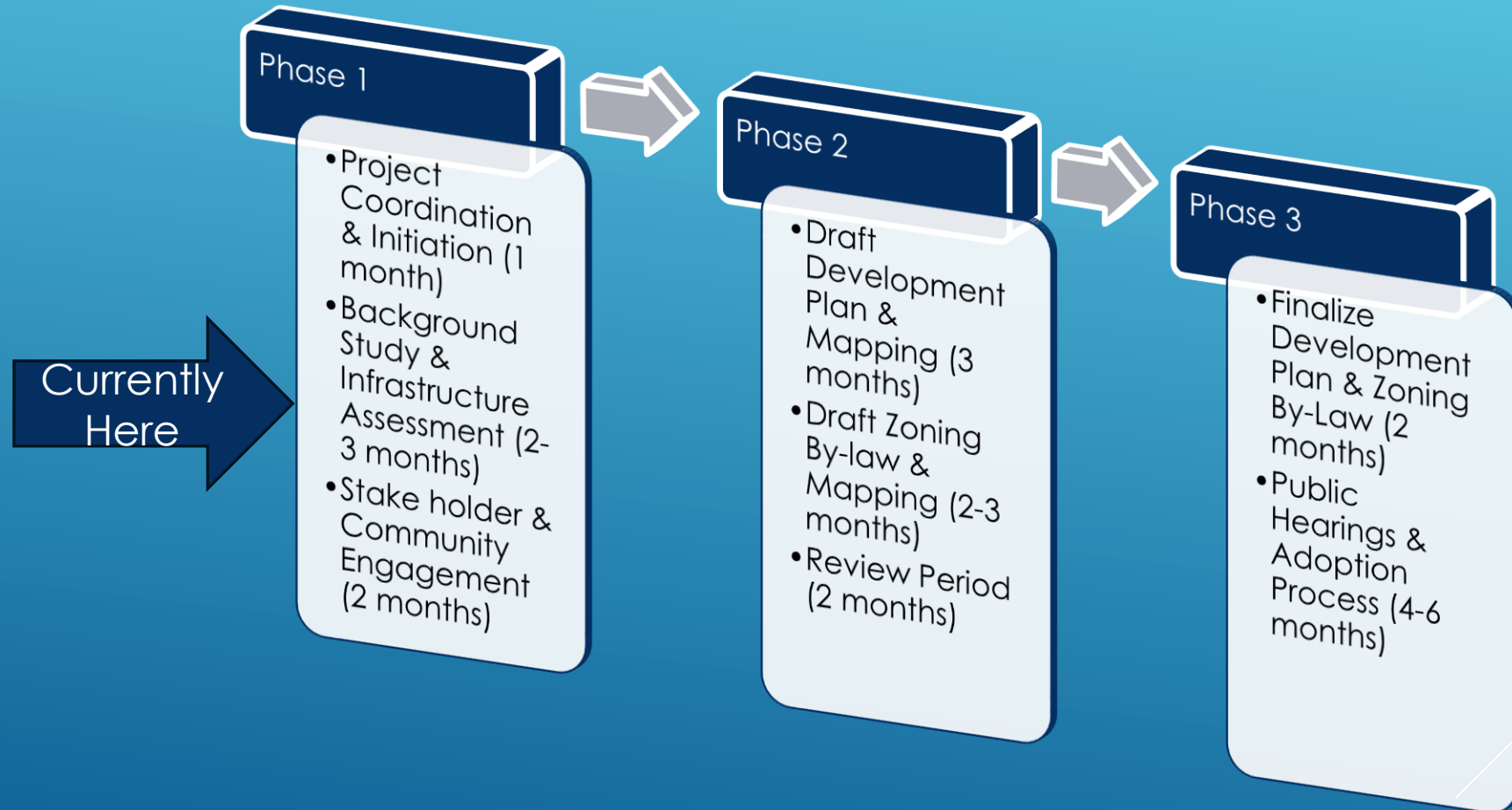
@rmofhanover
@rmofhanoverrecreation

PLANNING DEPARTMENT

Development Plan & Zoning By-Law Review

- Why review the Development Plan & Zoning By-Law?
 - Under the authority of The Planning Act, The Province of Manitoba requires municipalities to review their Development Plans on a regular basis, usually every 5 years.
 - Due to Hanover's consistent growth, a regular review is important to ensure the Municipality is growing and developing in a sustainable manner.
- When was the last review?
 - The Municipality commenced the last development plan review in 2016.
 - Current Development Plan & Zoning By-Law were adopted on March 13, 2019
- Who is conducting the review?
 - The Municipality has contracted Landmark Planning & Design Inc to spearhead this initiative.
- What is the cost?
 - The project is estimated to cost up to \$90,000. The Municipality has applied for a grant under the "From the Ground Up – Safe Healthy Communities For All" program with hopes of receiving up to 50% funding

- How long will this project take?
 - The total project is anticipated to take between 18-24 months. See the below outline.



Note: some tasks may occur concurrently with others

Growth of Wastewater Capacity in Manitoba

An Introduction to RSR Wastewater Cooperative



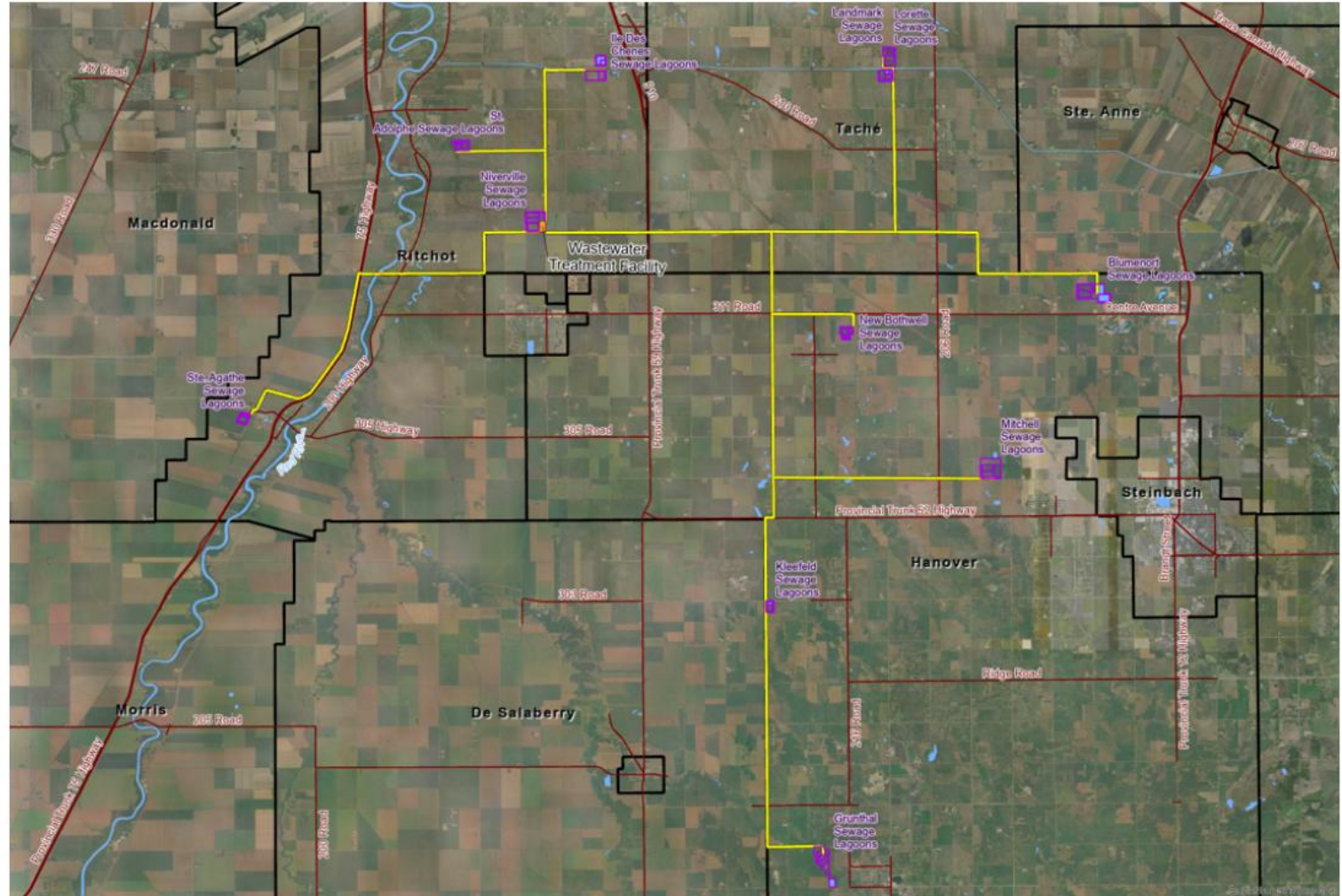
Who is RSR?

- RSR is the Red-Seine-Rat Wastewater Cooperative, a group of 6 municipalities in southeastern MB that have banded together to provide a regional solution to the restrictions to growth that current wastewater facilities have caused.
- RSR was originally formed in 2019 between 4 municipalities: the RM's of Hanover, Ritchot, and Tache, as well as the Town of Niverville.
- In 2024, RSR was further joined by two other members: the RM of La Broquerie and the communities of Otterburne & Providence University College inside the RM of De Salaberry.
- RSR will, once completed, provide wastewater treatment to service 12,600 new housing units, or a rough population total of 101,000.
- Over 90km of new pipeline will be build to connect current wastewater treatment in the associated communities to the new treatment facility.



RSR Map

(Does not include addition of De Salaberry and La Broquerie)



ENHANCING RECREATION IN HANOVER

**A New Recreation Delivery System
and Evolving Committee Roles**





WHY CHANGE WAS NEEDED.



OVERVIEW OF NEW RECREATION
DELIVERY SYSTEM.



HOW THIS BENEFITS THE
COMMUNITY AND VOLUNTEERS.

INTRODUCTION & PURPOSE

Operations/Maintenance shifted to RM of Hanover.

- **Grass Cutting, Parks and Playground Maintenance, Splash Pad, Sport Fields, Outdoor Rink and Skating Trails.**
- **Unified Parks/Capital Budgets and Operations.**

Community Rec Committee will oversee:

- **Programming, Community Events, assist in future visioning and planning.**
- **Community: Small Committees, more defined roles.**

WHAT'S CHANGING



3 Community Members + 1 LUD Member + Councilor

***Committees currently larger than 3 members can continue to operate as they are currently. When terms expire, and members are departing, new committee size will be established.



Nomination process to fill openings.

Council will appoint committees based on nominations.



Meeting Frequency: 4-6 times per year



Key Focus Areas:

Community Programming
Special Events
Visioning and Planning for future needs.

RECREATION COMMITTEE STRUCTURE AND RESPONSIBILITIES

- ▶ Operations and Maintenance
 - ▶ Staffing.
 - ▶ Maintenance of Parks, Greenspaces, Playgrounds, Splashpads, Sport Fields/Diamonds, Outdoor Skating including ODR's and Skating trails, toboggan slide etc.
 - ▶ Patron Feedback available through barcode scan.
 - ▶ Facility Rentals, invoicing, program registrations, payments.

RECREATION AND COMMUNITY SERVICES DEPARTMENT (HANOVER)

- ▶ Less Burden on Volunteers.
- ▶ More community-driven programming.
- ▶ Efficient and focused meetings.
- ▶ Flexible Schedules (including virtual options possible based on need).
- ▶ Enhanced ability for Hanover to consider larger capital projects by pooling resources.
- ▶ More efficient use of resources, including staff and equipment between communities.

BENEFITS OF NEW MODEL



Community nominations for open committee spots – Spring 2025.

- Council Selection of new committee members (where required).

Training and Onboarding for new committee members – June 2025.

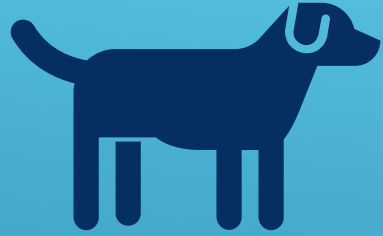
Transition period for new roles and responsibilities

NEXT STEPS AND IMPLEMENTATION TIMELINE



RE-BUILD AND ENHANCEMENT
OF SPLASH PAD.

2024 CAPITAL PROJECT RECAP



Dog Park – Harvest Bay



Proposed refresh of Blumenort
Rec Building/Change Area

2025 PROJECTS



Volunteers

- Fabiola Della Pria
- Jazmin Dobson
- Steve Zawadowski
- Mark Moesker

LUD

- Floyd Penner
- Kevin Medeiros
- Roger Dueck

Council

- Roberto Hiebert

BLUMENORT RECREATION COMMITTEE



Fun and Fair Committee

- Fabiola Della Pria
- Becca Martens
- Megan and Leonard Penner
- Lisa and Mark Moesker
- Laura Derksen

Thank you to all event volunteers!

FUN AND FAIR COMMITTEE



Annual Events!

- Santa Day
- Winter Fun Day
- Fun and Fair Days

Committee members needed!

FUN AND FAIR COMMITTEE



- **Blumenort's Signature Event!**
- Sept 5 & 6 – Blumenort soccer park.
- Family movie night
- Pancake breakfast, food trucks, market.
- Parade, market, live music, kids' activities, dog show, fireworks

Volunteers Needed!

FUN AND FAIR 2025



- A lot on Harvest Bay was acquired in the Winter of 2023.
- Sidewalk installed in Fall 2024.
- A parking lot and Dog park on the west side are already in the development stages for this summer in partnership with the LUD and Councillor for Ward 3.



HARVEST BAY GREEN SPACE

Committee Ideas:

- Heritage exhibit/shelter – this location has historical significance as “Plettville” .
- Outdoor exercise equipment.
- Kids play area with natural features, games obstacles etc...

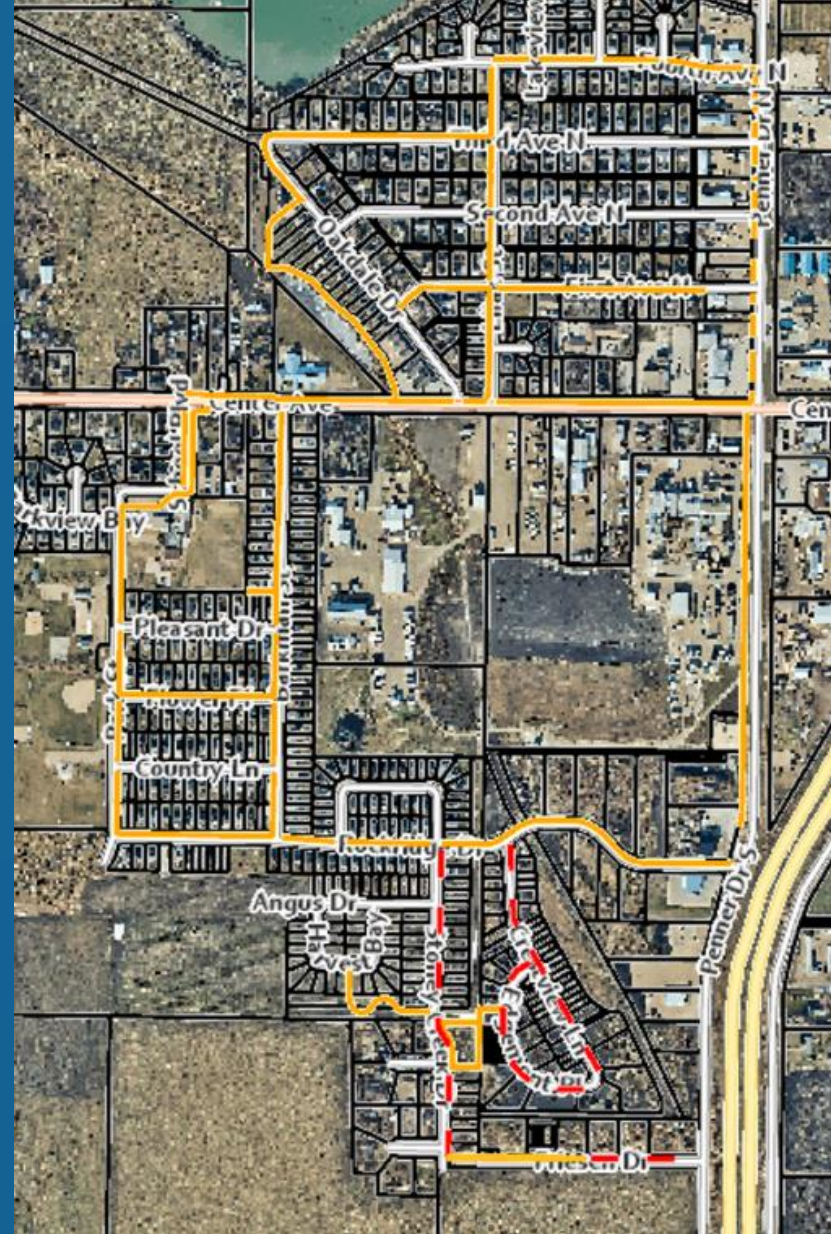
What do you think?

HARVEST BAY GREEN SPACE



ACTIVE TRANSPORTATION NETWORK

EXISTING
PLANNED



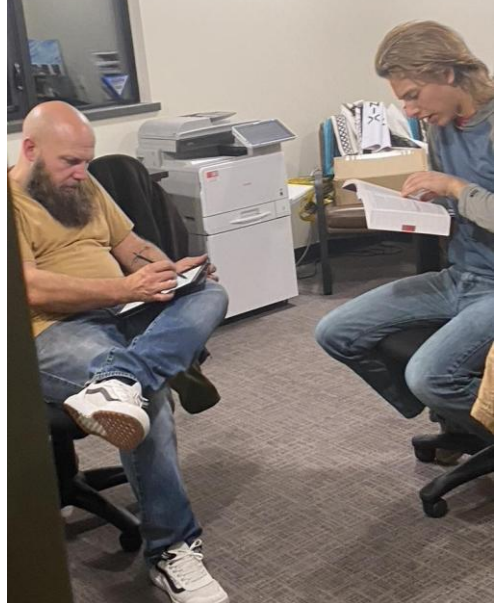
YFC Blumenort

2024 AGM Report



Dream to Reality







NAME REVEAL



THE MILL



INSPIRING HOPE & RESILIENCE

THIS NAME HONORS THE RICH FARMING HERITAGE OF BLUMENORT, SYMBOLIZING A WELCOMING SPACE FOR GATHERING, SUPPORT, AND CONNECTION. LIKE A MILL TRANSFORMING RAW MATERIALS INTO NUTRITIOUS FOOD, "THE MILL" EMBODIES THE TRANSFORMATION AND GROWTH THAT CAN OCCUR WITHIN A COMMUNITY, INSPIRING HOPE AND RESILIENCE.



Program

Monday - Drop In (Grade 7 - age 19) 7:30-9:30

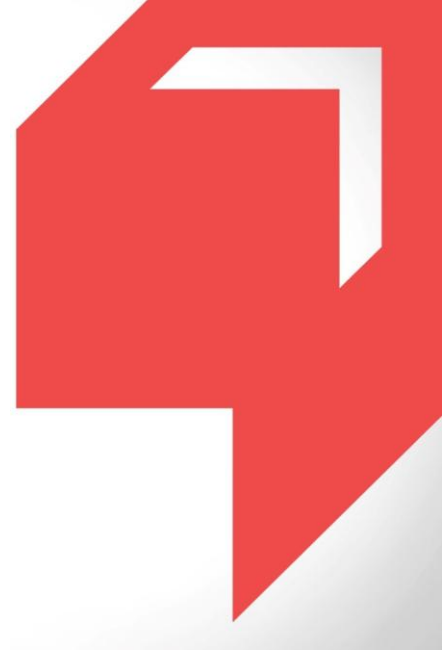
Wednesday - 1st & 3rd Girls Night (Grade 7 - age 19) 7:30-9:30

Wednesday - 2nd & 4th High School Night 7:30-9:30

Wednesday Guys night 4x per year. 5th week

Thursday - Drop In (Grade 7 - age 19) 7:30-9:30

Friday - NEW Young Adult once per month.



Thank You

Q&A

OPEN DISCUSSION

